



CASE STUDIES

CUSTOMER: British Petroleum
Flow Media: Cement

Service: Modulating

PROBLEM: Butterfly valve used for making cement used in the cement pipe casing process would wear out quickly from abrasion requiring repeated maintenance and system downtime. Additionally, butterfly disc directed flow of cement against downstream side of pipe causing erosion of pipe

Requirement:

More accurate process control and less maintenance of valve and adjoining pipe

SOLUTION:

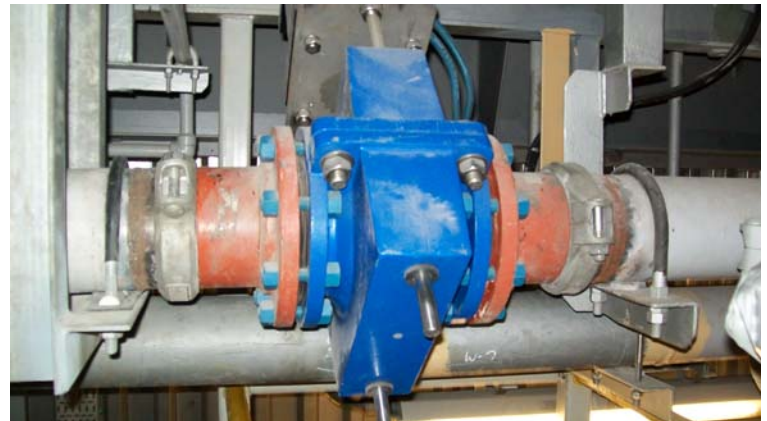
RF Valve® Pinch Valve
Model No. BE 6/4 PF90-513



The Thunder Horse area, Gulf of Mexico

RESULTS: Operating on the oil rig since 2006, the pinch valve was installed according to specifications to provide access to remove lower valve body for in-line replacement of elastomer tube without removing valve from pipeline minimizing system downtime and maintenance costs.

Provided with Siemens PS2, LED display, push button menu for calibration and diagnostics at the valve, customer was able to fine-tune control of their application by characterizing the control function to their specific requirements. Maintenance dramatically reduced and system uptime increased due to robust, long life of the elastomer tube insert, and quick replacement when worn.



Valve installation provides access for tube replacement